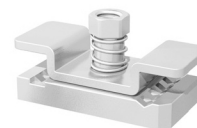
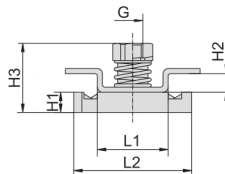
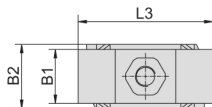


## Channel Rail Adaptor (for Use with Various Channel Rails) Type CRA



Group STAUFF	DIN	Dimensions (mm/in)									Ordering Codes (Standard Options)
		Thread G	L1	L2	L3	B1	B2	H1	H2	H3	
1	0										
1A	1										
2	2										
3	3										
4	4	M6 1/4-20 UNC	21 .83	35 1.38	40 1.57	16 .63	19 .75	6 .24	5,5 .22	20,5 .81	CRA-1-8/1D-M-W3 CRA-1-8/1D-U-W3
5	5										
6	6										
7	7										
8	8										

### Ordering Codes

Adaptor **\*CRA-\*1-8/1D-\*M-\*W3**

* Channel Rail Adaptor		<b>CRA</b>
* STAUFF Group	1 to 8 (DIN Group 0 to 8)	<b>1-8/1D</b>
* Thread code	Metric ISO thread	<b>M</b>
	Unified coarse (UNC) thread	<b>U</b>
* Material code	Carbon Steel, zinc/nickel-plated	<b>W3</b>
	Stainless Steel V4A	<b>W5</b>
	1.4401 / 1.4571 (AISI 316 / 316 Ti)	