

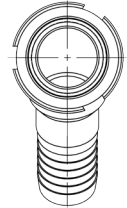
EBS Barb to Thread 45°

Great for smooth radius bends to avoid hose kinking ~ Sizes from 3/4" to 6"

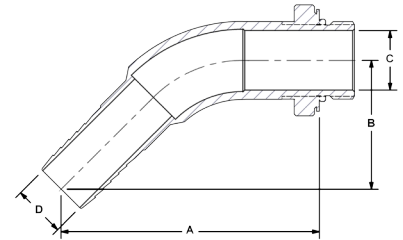
EBS is the 45° version of the HBL Hose Barb connectors. Useful for flooded suction and overhead reservoir applications.



- Available in SAE / BSP in sizes up to 6".
- Performance matched with DMIC Ball Valves for low flow restriction and mechanical rigidity.
- Results in professional looking power units.
- Eliminates leakage point with O-Ring seal up to 6".
- Stepsize model options allow full flow ID with hose barbs - see Dimension D for nominal bore size.
- Suction to 400 PSI.



EBS	Hose Barb to SAE/BSP Thread 45° Elbow					
	Port Codes	Port Size	Dimensions IN			
			A	B	C	D
HB HM S B	3/4"	4.11	2.08	0.75	0.63	
	1"	4.34	2.17	1.00	0.88	
	1 1/4"	5.08	2.65	1.25	1.00	
	1 1/2"	5.25	2.74	1.50	1.28	
	2"	6.03	3.23	2.00	1.75	
	2 1/2"	7.11	3.89	2.50	2.25	
	3"	8.08	4.42	3.00	2.75	
	4"	9.28	5.13	4.00	3.75	



Ordering Codes

EBS - ** HB - ** S - 1 1

O-Ring Elastomer	
Code	Description
1	Buna-N (standard)
2	Ethylene Propylene "EPR"
3	Viton

First Size Code	
Code	Port Size
07	3/4"
10	1"
12	1 1/4"
15	1 1/2"
20	2"
25	2 1/2"
30	3"
40	4"
50	5" - Call
60	6" - Call

Hose Barb Side	
Code	Description
HB	Inch Barb (Standard)
HM	Metric Barb

Choose Adapter Size
Replace ** with the desired adapter size.
Two different size codes selects step size option.

Second Size Code	
Code	Port Size
07	3/4"
10	1"
12	1 1/4"
15	1 1/2"
20	2"
25	2 1/2"
30	3"
40	4"
50	5" - Call
60	6" - Call

Thread Side	
Code	Description
S	SAE ORB (Standard)
B	BSP

Alternate Hose Barb Connection Standard
Replace the "HB" inch-barb connection (U.S.A.) with metric barb for export. Please call to confirm price and availability.

Alternate Thread Standard
Replace the "S" SAE ORB standard thread connection with a choice from the "Thread Side" table. Please call to confirm price and availability.

Adapter Material	
Code	Description
1	Low Carbon Steel
2	Stainless Steel

