

# ESN Int-Ext Thread Simplifier 45°

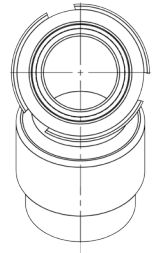
Three-in-one swivel elbow from reservoir to thread/socket weld



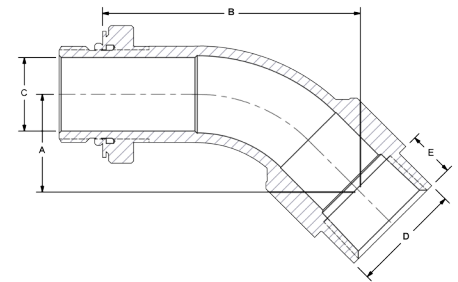
The ESN is ideal for placement of inlet valves in mechanically rigid flooded suction positions which are repeatable across power units. Internal thread/socket weld allows mounting of strainer or baffle pipe. External thread with swivel feature permits perfect alignment of shutoff valve.

- Built-in pilot simplifies alignment to reservoir \*
- Standard and expanded SAE/BSP ports.
- Choice of thread or socket weld internal connection.
- Available in Stainless Steel and special sealing.
- Suction to 400 PSI.

\* NOTE: There is "NO" pilot on a Female SAE connection - "D"



ESN	Suction Line Simplifier, 45° Elbow, w/Internal Thread					
	Port Codes	Port Size	Dimensions IN			
N S W4 B	3/4"	A	B	C	D	E
	1"	1.24	3.27	0.75	1.25	0.63
	1 1/4"	1.33	3.49	1.00	1.50	0.63
	1 1/2"	1.50	3.90	1.25	1.87	0.75
	2"	1.59	4.11	1.50	2.12	0.75
	2 1/2"	1.77	4.55	2.00	2.62	0.88
	3"	2.39	5.59	2.50	3.25	1.00
	4"	2.47	6.13	3.00	4.00	1.00
	3.18	7.33	4.00	5.00	1.00	



## Ordering Codes

ESN - \*\* N - \*\* S - 1 1

O-Ring Elastomer	
Code	Description
1	Buna-N (standard)
2	Ethylene Propylene "EPR"
3	Viton

First Size Code	
Code	Port Size
07	3/4"
10	1"
12	1 1/4"
15	1 1/2"
20	2"
25	2 1/2"
30	3"
40	4"
50	5" - Call
60	6" - Call

Internal Conn - F	
Code	Description
N	NPT-F (standard)
S	SAE-F ORB
W4	Sch. 40 Socket Weld
B	BSPP-F

Choose Adapter Size  
Replace \*\* with the desired adapter size.  
Two different size codes selects step size option.

Second Size Code	
Code	Port Size
07	3/4"
10	1"
12	1 1/4"
15	1 1/2"
20	2"
25	2 1/2"
30	3"
40	4"
50	5" - Call
60	6" - Call

External Thread - M	
Code	Description
S	Swivel SAE-M ORB
B	Swivel BSPP-M

Alternate Internal Connection (Old ESW type)  
Replace the "N" NPT-F standard internal connection with a Sch. 40 Socket Weld or other option from the "Internal Conn-F" table.

Alternate External Thread Standard  
Replace the "S" SAE-M standard thread connection with a choice from the "External Thread-M" table. Please call to confirm price and availability.

Adapter Material	
Code	Description
1	Low Carbon Steel
2	Stainless Steel

