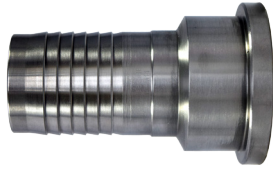


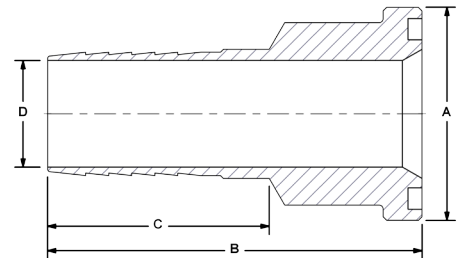
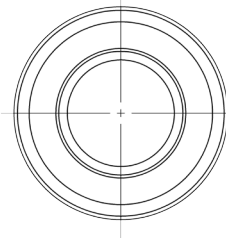
HBS Barb to Split Flange Head

Terminate to hose with this O-Ring sealed "staple" adapter



The HBS connector ingeniously permits a reliable O-Ring sealed junction between the inlet hose and SAE 4-Bolt pad components. Designers can have O-Ring sealing end-to-end, from reservoir to pump inlet, even with suction hose runs.

- Offered in all SSW to SAE J518 size possibilities, including step size and metric barb options.
- Sizes to 6" nominal ID.
- Suction to 400 PSI.
- Carbon Steel part number, see catalog F04 for other options.



HBS		Barb to SAE Split Flange Head, Inline				
Port Codes	Port Size	Dimensions IN				Split Flange Kit (carbon steel)
		A	B	C	D	
HB HM SM	¾"	1.50	3.06	1.81	0.63	FSL-0750SK
	1"	1.75	3.06	1.81	0.88	FSL-1000SK
	1¼"	2.00	3.63	2.38	1.05	FSL-1250SK
	1½"	2.38	3.63	2.38	1.28	FSL-1500SK
	2"	2.81	4.07	2.82	1.75	FSL-2000SK
	2½"	3.31	5.13	3.38	2.25	FSL-2500SK
	3"	4.00	5.75	3.54	2.75	FSL-3000SK
	4"	5.00	6.13	4.26	3.75	FSL-4000SK

Ordering Codes

HBS - ** HB - ** SM - 1 1

Null	
Code	Description
	This code is always "1"

First Size Code	
Code	Port Size
07	¾"
10	1"
12	1¼"
15	1½"
20	2"
25	2½"
30	3"
40	4"
50	5" - Call
60	6" - Call

Hose Barb Side	
Code	Description
HB	Inch Barb (Standard)
HM	Metric Barb

Choose Adapter Size
Replace ** with the desired adapter size.
Two different size codes selects step size option.

Second Size Code	
Code	Port Size
07	¾"
10	1"
12	1¼"
15	1½"
20	2"
25	2½"
30	3"
40	4"
50	5" - Call
60	6" - Call

Split Flange Side	
Code	Description
SM	C.61 Split Flange Head

Metric Hose Barb Connection
Adapters supplied in metric market locales use metric-barb IDs. Please call to confirm price and availability.

Adapter Material	
Code	Description
1	Low Carbon Steel
2	Stainless Steel

