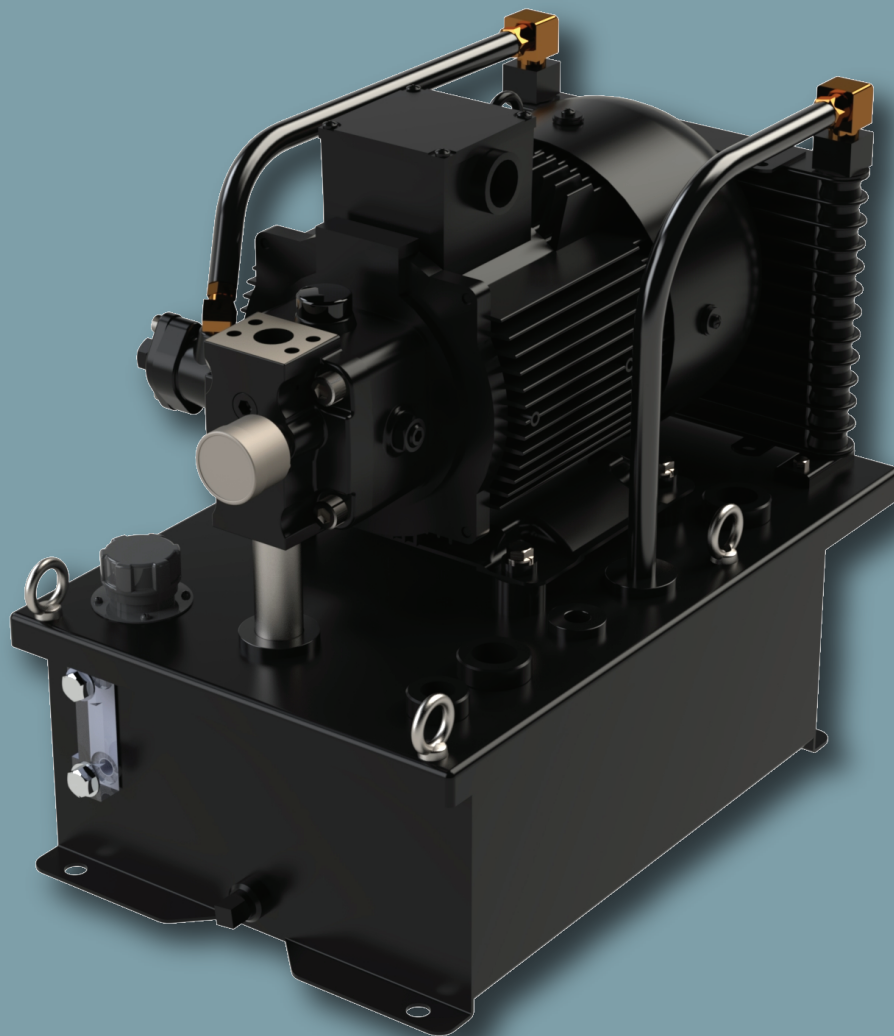


NACHI

NSP HYDRAULIC POWER UNIT
• **NEW DUAL VOLTAGE DESIGN** •
230/460 VAC

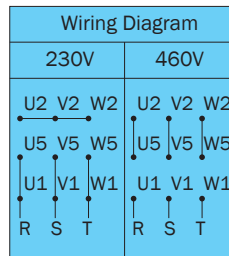


NACHI AMERICA INC.

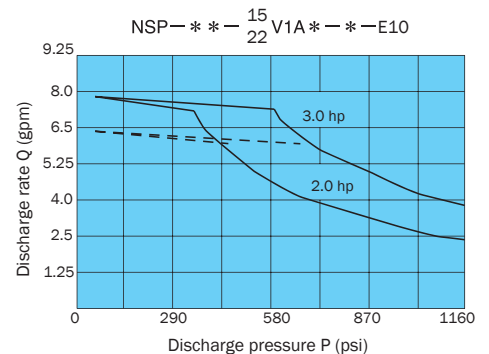
NSP 2.0 HYDRAULIC POWER UNIT



- Variable vane uni-pump allows for compact design
- Simple structure and excellent reliability ensures easy handling and maintenance



NSP Motor Selection Curve



UVN Uni-Pump

- New Dual Voltage cast iron motor provides a durable platform for diverse applications
- Nema premium efficiency motor
- High operating efficiency for lower power consumption and reduced heat generation

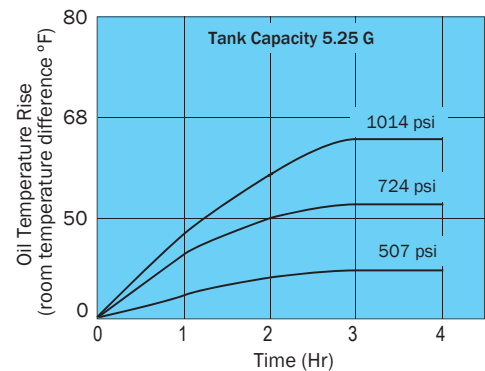
Nachi Design

- Reduced heat generation supports high precision applications
- 40% energy savings when compared to standard Nachi power units
- Minimal oil requirements reduces maintenance costs

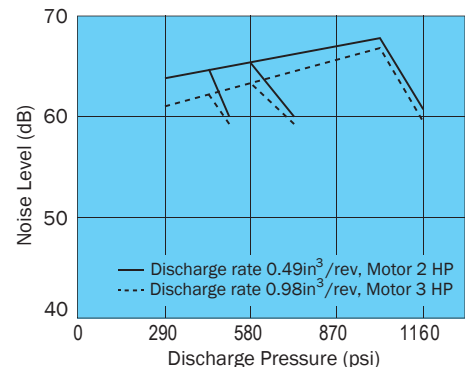
APPLICATIONS

- CNC Machine
- Mill
- Lathe
- Hydraulic Press
- Injection Molding Machine

Oil Temperature Difference vs. Time



dB vs. Pressure



*Temp & Pressure tests performed on NSP-20-*V*A4-E10

NSP 2.0 Hydraulic Power Unit

.49 to .98 cu in/rev
1160 psi

Model Code How to Order

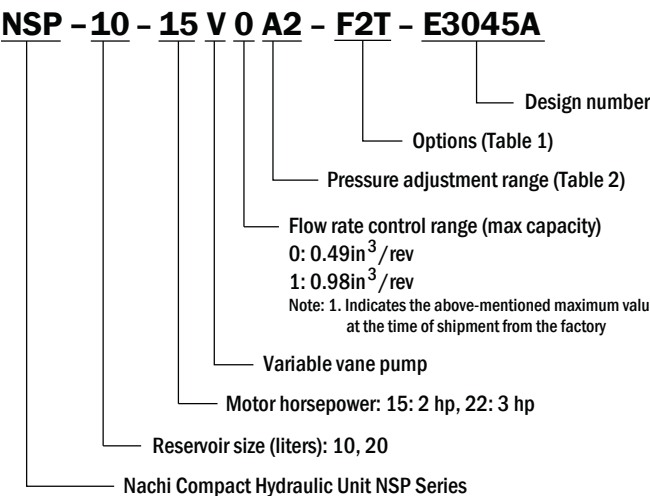


Table 1	F: Manifold Kit H: Temp/Level Switch T: Oil Gauge with Thermometer
---------	--

Table 2	A2: 217-580 psi A3: 507-870 psi A4: 796-1160 psi
---------	--

Notes: 2. There is a restriction to the combination, for example, between pump capacity and motor capacity.
3. The design number may be subject to change without prior notice due to changes in our policy. Please check with your sales rep.

Model No.	Pump Capacity (Cu-In/rev)	Flow Rate (Gpm)	Motor Capacity (Hp)	Maximum Pressure (Psi)	Tank Capacity (Gal)	Motor Voltage (Vac)
NSP-10-15V0A*.-***-E3045A	0.49	3.8	2	1160	2.5 (10L)	230/460 Dual Voltage
NSP-20-15V0A*.-***-E3045A			2		5.25 (20L)	
NSP-10-15V1A*.-***-E3045A	0.98	7.6	2		2.5 (10L)	
NSP-10-22V1A*.-***-E3045A			3		5.25 (20L)	
NSP-20-15V1A*.-***-E3045A			2			
NSP-20-22V1A*.-***-E3045A			3			

Selection Precautions

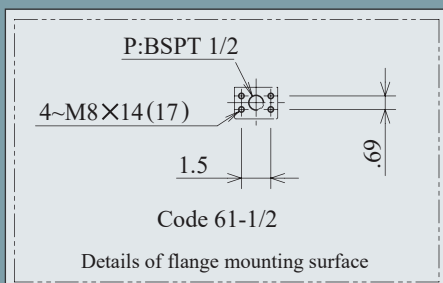
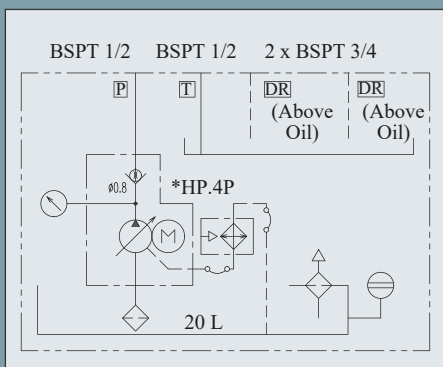
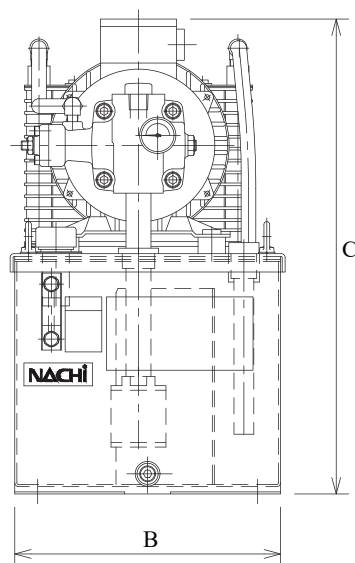
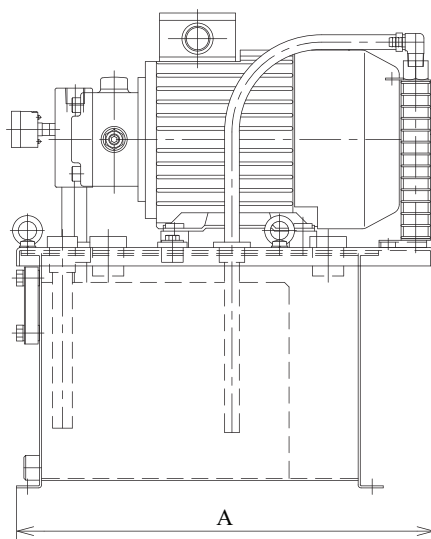
- Circuit Configuration
The basic configuration is a standard NSP-** plus an external manifold (circuit).
Provide piping with sufficient flexibility between the unit and external manifold.
Make sure the maximum peak pressure (setting pressure + surge pressure) during operation does not exceed 14MPa.
The following are typical pipe conditions at a reference maximum peak pressure at 14MPa or less as reference.

Rubber hose (for 14MPa) 1/2" x 2m (Pipe Capacity: 250cm³) pump operating conditions: 1MPa→7MPa, full cutoff
At pressures in excess of 14MPa, equip a circuit side surge cutoff relief valve.

- Built-in Manifold Block
When a manifold block (optional) is built into the pump, make sure the block and valve total weight is not greater than 15kg.

Block Type	F1	F2	F3
Block Weight (kg)	4.5	6.5	8.5
Allowable Additional Weight (kg)	10.5	8.5	6.5

- Paint Specifications
The interior and exterior of the tank and the motor are coated with a melamine baked-on resin coating, the motor is coated with a cation electrode-position coating, while the pump is spray painted with a lacquer finish. Color is Nachi standard color (Munsell No. N-1 70% gloss).



Model Number	Dimensions (in)		
	A	B	C
NSP-10-15V0A*~***	16.93	11.81	15.59
NSP-10-15V1A*~***			
NSP-20-15V0A*~***			19.61
NSP-20-15V1A*~***			
NSP-10-22V1A*~***	18.11		16.61
NSP-20-22V1A*~***			20.63

NACHI

Nachi America Inc.

715 Pushville Rd, Greenwood, IN 46143
 Tel. (800) 622-4410 Fax. (317) 530-1015
 Email: ml-nai.hydraulics@nachi.com
www.nachiamerica.com