

# SFM Split Head to Thread

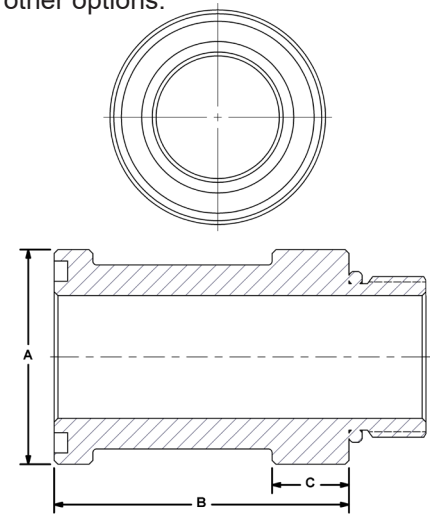
Convert SAE/BSP ports to Split Flange connection ~ 3/4" to 5"



The SFM converts a standard or expanded SAE/BSP port to Code 61 Split Flange Head. Ideal for emergency valve type conversions, and rigid mechanical mounting of valve to components.

- Works with standard SAE J518 split flanges up to BVAL working pressure (400 PSI).
- For full pressure service, select HSFM (Code 61) or HSFH (Code 62) see pages 18 or 19.
- Offered in SAE/BSP standard and expanded port sizes.
- Made in U.S.A.
- Suction to 400 PSI.
- Carbon Steel part number, see catalog F04 for other options.

SFM	C.61 Split Flange Head to Thread, Inline				
	Port Codes	Port Size	Dimensions IN		
A			B	C	
SM S B	3/4"	1.50	2.44	0.63	FSL-0750SK
	1"	1.75	2.40	0.63	FSL-1000SK
	1 1/4"	2.00	2.72	0.63	FSL-1250SK
	1 1/2"	2.38	2.72	0.63	FSL-1500SK
	2"	2.81	2.97	0.63	FSL-2000SK
	2 1/2"	3.31	3.18	0.63	FSL-2500SK
	3"	4.00	3.18	0.75	FSL-3000SK
4"	5.00	3.44	0.75	FSL-4000SK	



## Ordering Codes

**SFM - \*\* SM - \*\* S - 4 1**

First Size Code	
Code	Port Size
07	3/4"
10	1"
12	1 1/4"
15	1 1/2"
20	2"
25	2 1/2"
30	3"
40	4"
50	5" - Call

Split Flange Side	
Code	Description
SM	C.61 Split Flange Head

Choose Adapter Size  
Replace \*\* with the desired adapter size.  
Two different size codes selects step size option.

Second Size Code	
Code	Port Size
07	3/4"
10	1"
12	1 1/4"
15	1 1/2"
20	2"
25	2 1/2"
30	3"
40	4"
50	5" - Call

Thread Side	
Code	Description
S	SAE-M ORB
B	BSPP-M

Alternate Thread Standard  
Replace the "S" SAE ORB standard thread connection with a choice from the "Thread Side" table. Please call to confirm price and availability.

Adapter Material	
Code	Description
4	Aluminum

O-Ring Elastomer	
Code	Description
1	Buna-N (standard)
2	Ethylene Propylene "EPR"
3	Viton

