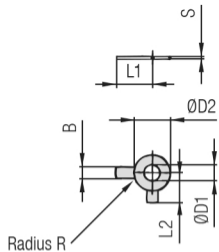


# Safety Washer

(for Use with Hexagon Head Bolt AS)

Type SI (DIN 463)



## Safety Washer SI

(Bend longer tab down towards the side of the clamp body  
and shorter tab up towards one of the flats of the hexagon head bolt)



Group	Dimensions (mm/in)	Ordering Codes							
STAUFF	DIN	ØD1	B	ØD2	L1	L2	R	S	(Standard Options)
1 to 8	0 to 8	6,4 .25	7 .28	12 .47	18 .71	9 .35	4 .16	0,5 .02	SI-6.4-DIN463-W3

## Ordering Codes

Safety Washer **\*SI-\*6.4-\*DIN463-\*W3**

\* Type of washer Safety washer with 2 tabs  
(according to DIN 463) **SI-6.4-DIN463**

\* Material code Carbon Steel, zinc/nickel-plated **W3**  
Stainless Steel V4A **W5**  
1.4401 / 1.4571 (AISI 316 / 316 Ti)

Safety Washers, type SI are used as locking devices to prevent Hexagon Head Bolts, type AS from loosening.  
Safety Washers, type SI are suitable for all Standard Series group sizes.

Alternative materials and surface finishings are available upon request. Contact STAUFF for further information.