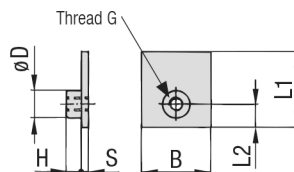
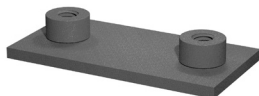
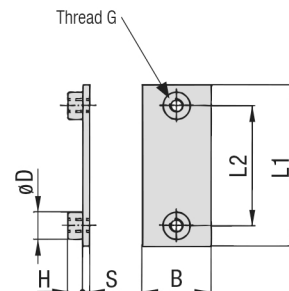


Single Weld Plate Type SP



STAUFF Group 1



STAUFF Group 1A to 8

Ordering Codes

Weld Plate

***SP-*1-*M-*W2**

* Single Weld Plate

SP

* STAUFF Group

1

* Thread code Metric ISO thread
 Unified coarse (UNC) thread

M
U

* Material code Carbon Steel, phosphated
 Carbon Steel, zinc/nickel-plated

W2
W3

Stainless Steel V2A
1.4301 / 1.4305 (AISI 304 / 303)

W4

Stainless Steel V4A
1.4401 / 1.4571 (AISI 316 / 316 Ti)

W5

Aluminium EN AW-6060
(Dimension S: 5 mm / .20 in)

W85

Group	STAUFF	DIN	Dimensions (mm/in)					H	øD	Ordering Codes (Standard Options)
			Thread G	L1	L2	B	S			
1	0		M6	31,5	10	30	3	6,5	12	SP-1-M-W2
			1/4-20 UNC	1.24	0.39	1.18	.12	.26	.47	SP-1-U-W2
1A	1		M6	36	20	30	3	6,5	12	SP-1A-M-W2
			1/4-20 UNC	1.42	0.79	1.18	.12	.26	.47	SP-1A-U-W2
2	2		M6	42	26	30	3	6,5	12	SP-2-M-W2
			1/4-20 UNC	1.65	1.02	1.18	.12	.26	.47	SP-2-U-W2
3	3		M6	50	33	30	3	6,5	12	SP-3-M-W2
			1/4-20 UNC	1.97	1.30	1.18	.12	.26	.47	SP-3-U-W2
4	4		M6	60	40	30	3	6,5	12	SP-4-M-W2
			1/4-20 UNC	2.36	1.57	1.18	.12	.26	.47	SP-4-U-W2
5	5		M6	71	52	30	3	6,5	12	SP-5-M-W2
			1/4-20 UNC	2.80	2.05	1.18	.12	.26	.47	SP-5-U-W2
6	6		M6	88	66	30	3	6,5	12	SP-6-M-W2
			1/4-20 UNC	3.46	2.60	1.18	.12	.26	.47	SP-6-U-W2
7	7		M6	122	94	30	5	6,5	12	SP-7-M-W2
			1/4-20 UNC	4.80	3.70	1.18	.20	.26	.47	SP-7-U-W2
8	8		M6	148	120	30	5	6,5	12	SP-8-M-W2
			1/4-20 UNC	5.83	4.72	1.18	.20	.26	.47	SP-8-U-W2

All threaded parts are available with Metric ISO thread or unified coarse (UNC) thread according to dimension table. Alternative materials and surface finishings are available upon request. Contact STAUFF for further information.