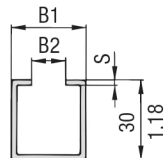
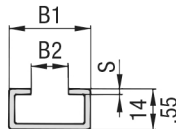
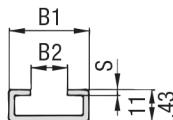
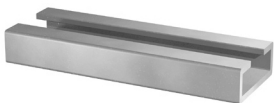


# Mounting Rail

(for Use with Hexagon Rail Nut SM / SMG)

## Type TS



Mounting Rail TS-11

Mounting Rail TS-14

Mounting Rail TS-30

Ordering Codes		
<b>Mounting Rail</b>	<b>*TS-*</b>	<b>*11-*</b>
<b>* Mounting Rail</b>		<b>TS</b>
<b>* Height of rail</b>	11 mm / .43 in	<b>11</b>
	14 mm / .55 in	<b>14</b>
	30 mm / 1.18 in	<b>30</b>
<b>* Length of rail</b>	1 m / 3.28 ft	<b>1M</b>
	2 m / 6.56 ft	<b>2M</b>
	Alternative lengths available upon request. Contact STAUFF for further information.	
<b>* Material code</b>	Carbon Steel, uncoated	<b>W1</b>
	Carbon Steel, hot-dip galvanised	<b>W98</b>
	Stainless Steel V2A	<b>W4</b>
	1.4301 / 1.4305 (AISI 304 / 303)	
	Stainless Steel V4A	<b>W5</b>
	1.4401 / 1.4571 (AISI 316 / 316 Ti)	

Group	STAUFF	DIN	Dimensions (mm/in)			Ordering Codes (Standard Options)	
			B1	B2	S	Length of Rail: 1 m / 3.28 ft	Length of Rail: 2 m / 6.56 ft
1		0					
1A		1				Height 11 mm / .43 in <b>TS-11-1M-W1</b>	Height 11 mm / .43 in <b>TS-11-2M-W1</b>
2		2					
3		3					
4		4	28 1.10	11 .43	2 .08	Height 14 mm / .55 in <b>TS-14-1M-W1</b>	Height 14 mm / .55 in <b>TS-14-2M-W1</b>
5		5					
6		6					
7		7				Height 30 mm / 1.18 in <b>TS-30-1M-W1</b>	Height 30 mm / 1.18 in <b>TS-30-2M-W1</b>
8		8					

Mounting Rails, type TS-11/14/30 are suitable for all Standard Series and Twin Series group sizes. Alternative materials and surface finishings are available upon request. Contact STAUFF for further information.