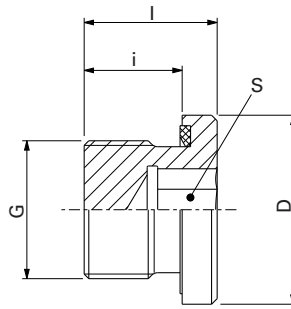


# Blanking ends

## VS-R ... -WD

### VS-R ... -WD-1.4571

- with hexagon socket
- with soft seal made from NBR\* (e.g. Perbunan) for steel
- with soft seal made from FKM (e.g. Viton) for stainless steel (1.4571)
- Inch studs type E to DIN EN ISO 1179-2



J

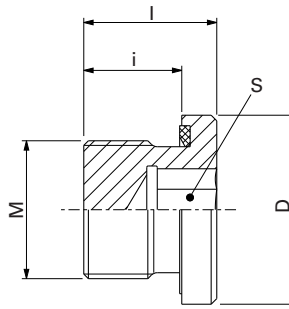
PN bar (psi)	DIN - ISO 228 (R..., DIN 259)	Model	kg/ 100 pc.	D	l	i	S	O-ring	Blanking ends	Blanking ends
									VS-R ... -WD	Stainless steel (1.4571) VS-R ... -WD-1.4571
									Art. no.	Art. no.
400 (5801)	G 1/8 A	<b>VS-R 1/8 -WD</b>	0.6	14	12	8	5	3 x 1	<b>WAL036856</b>	<b>WAL602800</b>
	G 1/4 A	<b>VS-R 1/4 -WD</b>	1.4	19	17	12	6	5 x 1	<b>WAL036858</b>	<b>WAL374787</b>
	G 3/8 A	<b>VS-R 3/8 -WD</b>	2.1	22	17	12	8	7 x 1	<b>WAL036860</b>	<b>WAL374841</b>
	G 1/2 A	<b>VS-R 1/2 -WD</b>	4.0	27	19	14	10	4.5 x 1.5	<b>WAL036862</b>	<b>WAL372597</b>
	G 3/4 A	<b>VS-R 3/4 -WD</b>	7.5	32	21	16	12	6 x 1.5	<b>WAL036864</b>	<b>WAL602802</b>
250 (3626)	G 1 A	<b>VS-R 1 -WD</b>	11.8	40	22.5	16	17	8.5 x 1.5	<b>WAL036866</b>	<b>WAL374498</b>
	G 1 1/4 A	<b>VS-R 1 1/4 -WD</b>	18.6	50	22.5	16	22	10 x 1.5	<b>WAL036868</b>	<b>WAL371504</b>
400 (5801)	G 1 1/2 A	<b>VS-R 1 1/2 -WD</b>	24.7	55	22.5	16	24	12 x 2	<b>WAL036870</b>	<b>WAL609394</b>
	G 1 1/4 A	<b>VS-R 1 1/4 -WD/PN 400</b>	28.3	50	28	20	22	15 x 2	<b>WAL372905</b>	
	G 1 1/2 A	<b>VS-R 1 1/2 -WD/PN 400</b>	39.2	55	30	22	24	20 x 2	<b>WAL372989</b>	

**⚠ Caution:** The pressure specifications refer to the steel version. For the stainless steel version (1.4571), please refer to the pressure specifications on page B5.  
\*For FPM (e.g. Viton) see price list / available on request

## VS-M ... -WD

### VS-M ... -WD-1.4571

- with hexagon socket
- with soft seal made from NBR\* (e.g. Perbunan) for steel
- with soft seal made from FKM (e.g. Viton) for stainless steel (1.4571)
- Metric stud type E to DIN EN ISO 9974-2



J

PN bar (psi)	M	Model	kg/ 100 pc.	D	l	i	S	Blanking ends	Blanking ends
								VS-M ... -WD	Stainless steel (1.4571) VS-M ... -WD-1.4571
								Art. no.	Art. no.
400 (5801)	M 10 x 1	<b>VS-M 10 x 1 -WD</b>	0.6	14	12	8	5	<b>WAL028302</b>	<b>WAL605040</b>
	M 12 x 1.5	<b>VS-M 12 x 1.5 -WD</b>	1.1	17	17	12	6	<b>WAL028303</b>	<b>WAL605042</b>
	M 14 x 1.5	<b>VS-M 14 x 1.5 -WD</b>	1.5	19	17	12	6	<b>WAL028304</b>	<b>WAL374724</b>
	M 16 x 1.5	<b>VS-M 16 x 1.5 -WD</b>	1.8	22	17	12	8	<b>WAL028305</b>	<b>WAL605044</b>
	M 18 x 1.5	<b>VS-M 18 x 1.5 -WD</b>	2.8	24	17	12	8	<b>WAL029844</b>	<b>WAL604532</b>
	M 20 x 1.5	<b>VS-M 20 x 1.5 -WD</b>	3.6	26	19	14	10	<b>WAL028306</b>	<b>WAL609395</b>
	M 22 x 1.5	<b>VS-M 22 x 1.5 -WD</b>	4.6	27	19	14	10	<b>WAL028307</b>	<b>WAL374725</b>
	M 26 x 1.5	<b>VS-M 26 x 1.5 -WD</b>	7.2	32	21	16	12	<b>WAL028308</b>	<b>WAL617296</b>
	M 27 x 2	<b>VS-M 27 x 2 -WD</b>	7.5	32	21	16	12	<b>WAL028309</b>	<b>WAL605284</b>
M 33 x 2	<b>VS-M 33 x 2 -WD</b>	11.8	40	22.5	16	17	<b>WAL028310</b>	<b>WAL605143</b>	
250 (3626)	M 42 x 2	<b>VS-M 42 x 2 -WD</b>	18.6	50	22.5	16	22	<b>WAL028311</b>	<b>WAL617297</b>
	M 48 x 2	<b>VS-M 48 x 2 -WD</b>	24.7	55	22.5	16	24	<b>WAL028312</b>	<b>WAL617298</b>
400 (5801)	M 42 x 2	<b>VS-M 42 x 2 -WD/PN 400</b>	28.3	50	28	20	22	<b>WAL608445</b>	
	M 48 x 2	<b>VS-M 48 x 2 -WD/PN 400</b>	39.2	55	30	22	24	<b>WAL608446</b>	

**⚠ Caution:** The pressure specifications refer to the steel version. For the stainless steel version (1.4571), please refer to the pressure specifications on page B5.  
 \*For FPM (e.g. Viton) see price list / available on request