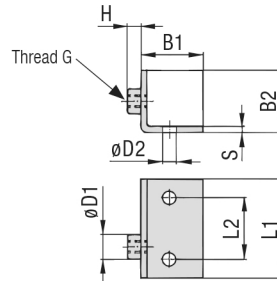
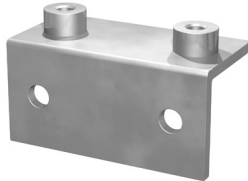
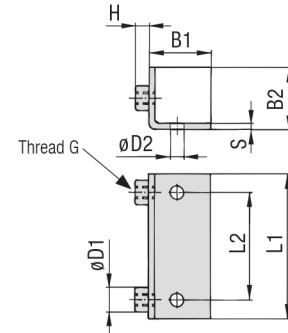


Angled Weld Plate Type WSP



STAUFF Group 1



STAUFF Group 1A to 6

Ordering Codes

Weld Plate

***WSP-*1-*M-*W1**

* Angled Weld Plate

WSP

* STAUFF Group

1

* Thread code

Metric ISO thread
Unified coarse (UNC) thread

M

U

* Material code

Carbon Steel, zinc/nickel-plated
Stainless Steel V2A
1.4301 / 1.4305 (AISI 304 / 303)
Stainless Steel V4A
1.4401 / 1.4571 (AISI 316 / 316 Ti)

W3

W4

W5

Group	STAUFF	DIN	Dimensions (mm/in)								Ordering Codes (Standard Options)	
			Thread G	L1	L2	B1	B2	S	H	øD1		øD2
1	0		M6	30	14	30	30	3	6,5	12	6,5	WSP-1-M-W1
			1/4-20 UNC	1.18	.55	1.18	1.18	.12	.26	.47	.26	WSP-1-U-W1
1A	1		M6	36	20	30	30	3	6,5	12	6,5	WSP-1A-M-W1
			1/4-20 UNC	1.26	.79	1.18	1.18	.12	.26	.47	.26	WSP-1A-U-W1
2	2		M6	42	26	30	30	3	6,5	12	6,5	WSP-2-M-W1
			1/4-20 UNC	1.65	1.02	1.18	1.18	.12	.26	.47	.26	WSP-2-U-W1
3	3		M6	50	33	30	30	3	6,5	12	6,5	WSP-3-M-W1
			1/4-20 UNC	1.97	1.30	1.18	1.18	.12	.26	.47	.26	WSP-3-U-W1
4	4		M6	60	40	30	30	3	6,5	12	6,5	WSP-4-M-W1
			1/4-20 UNC	2.36	1.57	1.18	1.18	.12	.26	.47	.26	WSP-4-U-W1
5	5		M6	70	52	30	30	3	6,5	12	6,5	WSP-5-M-W1
			1/4-20 UNC	2.76	2.05	1.18	1.18	.12	.26	.47	.26	WSP-5-U-W1
6	6		M6	88	66	30	30	3	6,5	12	6,5	WSP-6-M-W1
			1/4-20 UNC	3.46	2.60	1.18	1.18	.12	.26	.47	.26	WSP-6-U-W1