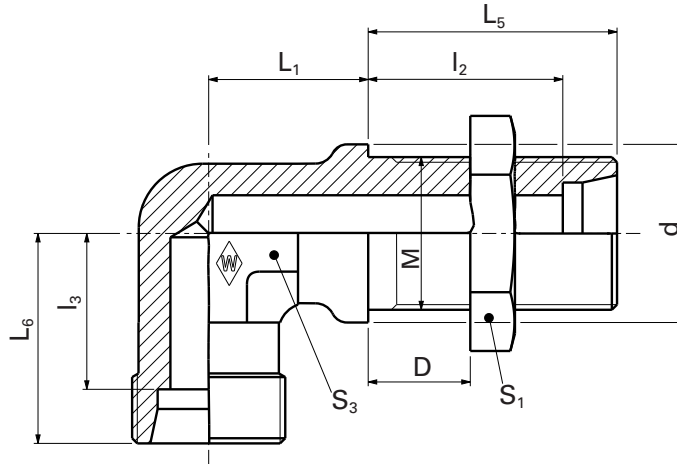


WSS ...
WSS ... -1.4571



E

System nuts for supplementing the stud
 (for technical data, see part D of this catalog)

Series	PN bar (psi)	Tube outer diameter	Model	M	D min.	D max.	kg/ 100 pc.	Stud WSS ... Art. no.	Stainless steel stud WSS ... -1.4571* Art. no.	WALRING W-R ... VI Art. no.	WALFORM WF-M ... VI Art. no.	WALFORM stainless steel WF-M ... VI-1.4571* Art. no.
L	500 (7252)	6	WSS 6 L m. 6kt M	M 12 x 1.5	4	16	5.0	WAL063274	WAL617488	WAL624607	WAL625940	WAL625980
		8	WSS 8 L m. 6kt M	M 14 x 1.5	4	16	6.5	WAL024146	WAL617489	WAL624608	WAL625941	WAL625981
		10	WSS 10 L m. 6kt M	M 16 x 1.5	4	16	8.0	WAL024127	WAL608422	WAL624609	WAL625942	WAL625982
	400 (5801)	12	WSS 12 L m. 6kt M	M 18 x 1.5	4	16	10.0	WAL063773	WAL615355	WAL624610	WAL625943	WAL625983
		15	WSS 15 L m. 6kt M	M 22 x 1.5	4	16	17.0	WAL063275	WAL617490	WAL624611	WAL625944	WAL625984
		18	WSS 18 L m. 6kt M	M 26 x 1.5	4	16	24.0	WAL063774	WAL617491	WAL624612	WAL625945	WAL625985
	250 (3626)	22	WSS 22 L m. 6kt M	M 30 x 2	5	16	64.2	WAL063775	WAL612437	WAL624613	WAL625946	WAL625986
		28	WSS 28 L m. 6kt M	M 36 x 2	5	16	44.5	WAL063776	WAL615221	WAL624614	WAL625947	WAL625987
		35	WSS 35 L m. 6kt M	M 45 x 2	5	16	68.8	WAL063777	WAL617492	WAL624615	WAL625948	WAL625988
		42	WSS 42 L m. 6kt M	M 52 x 2	5	16	196.7	WAL063778	WAL617493	WAL624616	WAL625949	WAL625989
S	800 (11603)	6	WSS 6 S m. 6kt M	M 14 x 1.5	4	16	7.5	WAL063779	WAL617494	WAL624617	WAL625950	WAL625990
		8	WSS 8 S m. 6kt M	M 16 x 1.5	4	16	10.0	WAL063780	WAL617495	WAL624618	WAL625951	WAL625991
		10	WSS 10 S m. 6kt M	M 18 x 1.5	4	16	12.2	WAL063781	WAL617496	WAL624619	WAL625952	WAL625992
	630 (9137)	12	WSS 12 S m. 6kt M	M 20 x 1.5	4	16	16.0	WAL063782	WAL617497	WAL624620	WAL625953	WAL625993
		14	WSS 14 S m. 6kt M	M 22 x 1.5	4	16	20.0	WAL063783	WAL617498			
		16	WSS 16 S m. 6kt M	M 24 x 1.5	4	16	23.0	WAL063784	WAL601079	WAL624621	WAL625954	WAL625994
	400 (5801)	20	WSS 20 S m. 6kt M	M 30 x 2	5	16	38.5	WAL063785	WAL612438	WAL624622	WAL625955	WAL625995
		25	WSS 25 S m. 6kt M	M 36 x 2	5	16	62.0	WAL063786	WAL615212	WAL624623	WAL625956	WAL625996
		30	WSS 30 S m. 6kt M	M 42 x 2	5	16	88.5	WAL063244	WAL615651	WAL624624	WAL625957	WAL625997
		38	WSS 38 S m. 6kt M	M 52 x 2	5	16	129.9	WAL063787	WAL617499	WAL624625	WAL625958	WAL625998

⚠ Caution: The pressure specifications refer to the steel version. For the stainless steel version (1.4571), please refer to the pressure specifications on page B5.

Special parts are available on request.